

OIML test certificate no. D09-06.07

OIML C of C no. R60/2000-CNI-06.02

NTEP certificate no. 06-099A1



- Stainless steel IP67 "S" type load cell
- Tension and compression applications
- Suitable for hanging, hopper and other weighing devices
- Also available in imperial capacities and dimensions

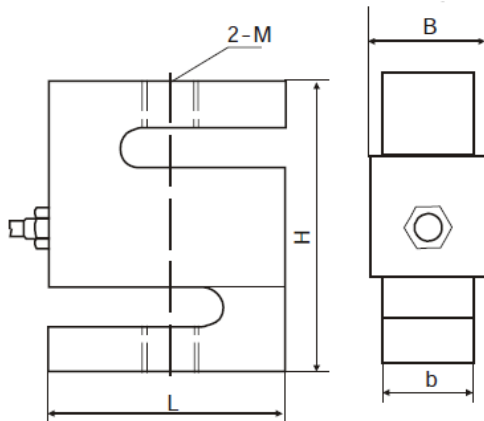


Capacity	Accuracy	Part-Number
50 kg	C3	B3G-C3-50kg-6B
100 kg	C3	B3G-C3-100kg-6B
250 kg	C3	B3G-C3-250kg-6B
500 kg	C3	B3G-C3-500kg-6B
1.0 t	C3	B3G-C3-1.0t-6B
2.5 t	C3	B3G-C3-2.5t-6B
5.0 t	C3	B3G-C3-5.0t-6B
7.5 t	C3	B3G-C3-7.5t-6B
10 t	C3	B3G-C3-10.0t-6B

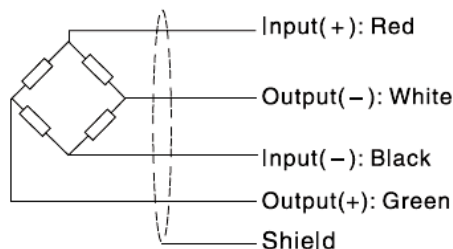
## Specification:

Accuracy class	OIML R60 C3		
Output sensitivity (= FS)	mV/V	3.0 ± 0.008	
Maximum capacity (E <sub>max</sub> )	t	0.05/0.1	0.25/0.5/1/2.5
Maximum number of load cell intervals (n <sub>LC</sub> )		3000	
Ratio of minimum LC verification interval Y = E <sub>max</sub> / v <sub>min</sub>		7000	10000
Combined Error	%FS	≤ ± 0.0200	
Minimum dead load	kg	0	
Safe overload	of E <sub>max</sub>	150 %	
Ultimate overload	of E <sub>max</sub>	300 %	
Zero balance	of FS	≤ ± 1.0 %	
Excitation, recommended voltage	V	5 ~ 12	
Excitation maximum	V	18	
Terminal resistance, input	Ω	430 ± 50	
Terminal resistance, output	Ω	351 ± 2	
Insulation impedance	MΩ	≥5000 ( at 50VDC )	
Temperature range, compensated	°C	-10 ~ +40	
Temperature range, operating	°C	-35 ~ +65	
Element material		Stainless steel	
Ingress Protection (according to EN 60529)		IP67	
ATEX classification (optional)		II1G Ex ia II1C T4	II1D Ex iaD 20 T73°C
			II3G nL IIC T4

## Outline Dimensions in mm



Capacity	L	H	b	B	M
0.05t, 0.1t (0.05-0.3klb)	50.8 (2.00)	60.96 (2.40)	11.68 (0.46)	15.06 (0.59)	M8 (1/4-28UNF)
0.25t, 0.5t (0.5-1.5klb)	50.8 (2.00)	60.96 (2.40)	18.03 (0.71)	21.41 (0.84)	M12 (1/2-20UNF)
1t (2.2.5klb)	50.8 (2.00)	60.96 (2.40)	24.38 (0.96)	27.76 (1.09)	M12 (1/2-20UNF)
2.5t (3klb)	76.2 (3.00)	99.06 (3.90)	24.38 (0.96)	27.76 (1.09)	M20×1.5 (1/2-20UNF)
5klb	76.2 (3.00)	99.06 (3.90)	24.38 (0.96)	27.76 (1.09)	3/4-16UNF
5t (10klb)	74.68 (2.94)	99.06 (3.90)	30.74 (1.21)	34.12 (1.34)	M20×1.5 (3/4-16UNF)
7.5t (15klb)	87.38 (3.44)	139.7 (5.50)	37.08 (1.46)	40.46 (1.59)	M24×2 (1-14UNF)
10t (20klb)	112.78 (4.44)	177.8 (7.00)	42.93 (1.69)	46.31 (1.82)	M30×2 (5/4-12UNF)



### Wiring:

- Shielded, 4 conductor cable.
- Cable: Ø5 mm.
- Standard cable length: 6m.
- Cable type and cable length for customer's own application are available on request.
- Shield not connected to element.